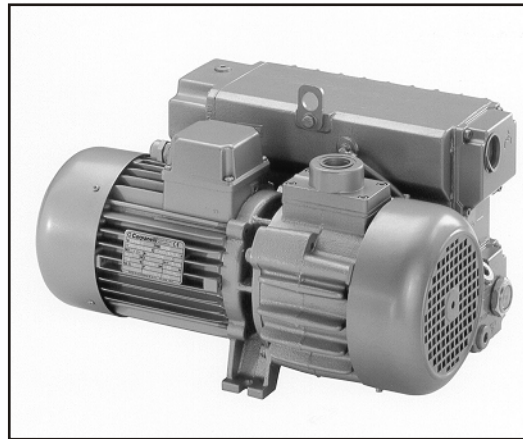


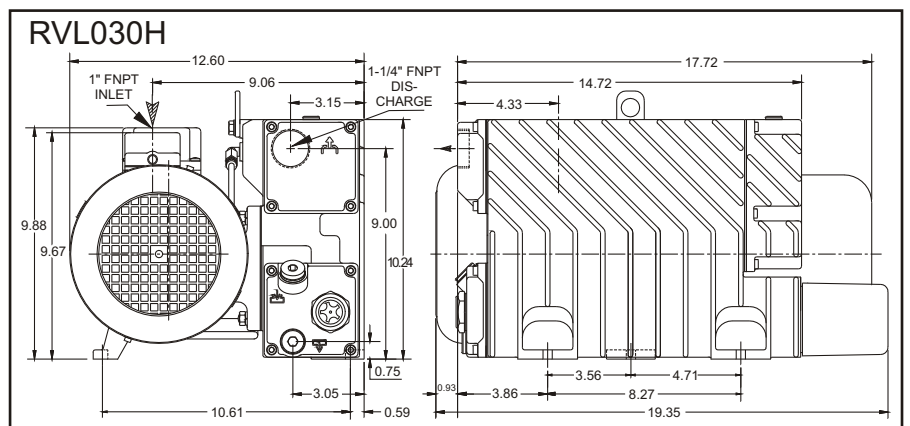
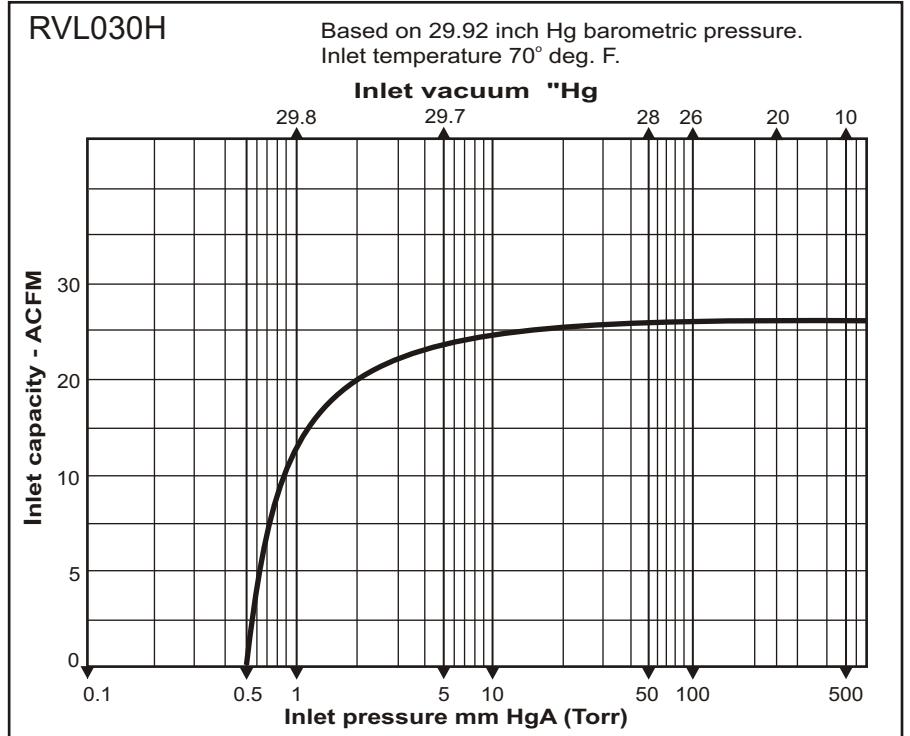
DuraVane lubricated rotary vane pumps are single-stage pumps with an integrated closed loop oil recirculation system.

- Heavy duty construction.
- Compact design, small footprint.
- High-tech vane material provides long vane life.
- Gas ballast valve is standard.
- Low noise level.
- Low maintenance.
- Air-cooled design.
- Internally mounted inlet check valve.
- High efficiency multi-stage exhaust filter removes 99.9% of exhaust smoke.
- Direct drive.
- Simple to install.



Performance characteristics

Displacement:	28CFM
Final pressure:	0.5Torr
Motor:	2HP/60HzTEFC
Voltage:	115/230V/1phase 208/230/460V/3phase
Speed:	1800RPM
Noise level(at 3ft):	67dBA
Oil reservoir cap.:	1.5qt
Oil type:	Duratex 68
Weight:	96Lbs
Inlet conn.:	1"NPT
discharge conn.:	1-1/4"NPT



Information contained in this document is for reference only. Subject to change without notice.

Contact us at 1-800-521-2083 or email at: sales@combinedfluidproducts.com • Request Information